

Extensions of local fields in characteristic 0 and
characteristic p
(d'après P. Deligne)

Kevin Keating
Department of Mathematics
University of Florida

June 1, 2023

Notation

Let K be a local field, complete w.r.t. the valuation $v_K : K^\times \rightarrow \mathbb{Z}$. Then v_K extends uniquely to a valuation on the separable closure K^{sep} of K , which we also denote by v_K . Define

$$\begin{aligned}\mathcal{O}_K &= \{x \in K : v_K(x) \geq 0\} \\ \mathcal{P}_K &= \{x \in K : v_K(x) > 0\}.\end{aligned}$$

Assume that the residue field $k = \mathcal{O}_K/\mathcal{P}_K$ of K is a perfect field of characteristic p .

If $\text{char}(K) = 0$ and k is finite, then K is a finite extension of \mathbb{Q}_p .

If $\text{char}(K) = p$ then $K \cong k((t))$.

Let $e_K = v_K(p)$ be the absolute ramification index of K .

Let π_K be a uniformizer for K . Thus $v_K(\pi_K) = 1$.

If L/K is an extension of local fields let $e_{L/K} = v_L(\pi_K)$ denote the ramification index of L/K .

A not-so-crazy idea

If $\text{char}(K) = 0$ but e_K is large then K should be similar to a local field of characteristic p .

In fact, let K be a local field of characteristic 0 with residue field k , and let F be a local field of characteristic p with the same residue field k . Then for $1 \leq d \leq e_K$ we have

$$\mathcal{O}_K/\mathcal{P}_K^d \cong k[[t]]/(t^d) \cong \mathcal{O}_F/\mathcal{P}_F^d.$$

Deligne [De79] devised a theory of extensions of “truncated valuation rings” which correspond to extensions of both K and F , but with bounds on ramification.

This leads to a one-to-one correspondence between extensions of K with bounded ramification and extensions of F with bounded ramification.

The category of truncated valuation rings

Define a category \mathcal{T} whose objects are triples (A, M, ϵ) , where

- A is an Artin local ring whose maximal ideal \mathcal{P}_A is principal.
- A/\mathcal{P}_A is a perfect field with positive characteristic.
- M is a free A -module of rank 1.
- $\epsilon : M \rightarrow A$ is an A -module homomorphism such that $\epsilon(M) = \mathcal{P}_A$.

Define the length of $S = (A, M, \epsilon)$ to be the length of the A as an A -module.

Example

Let K be a local field and let $d \in \mathbb{N}$. Set $A = \mathcal{O}_K/\mathcal{P}_K^d$, $M = \mathcal{P}_K/\mathcal{P}_K^{d+1}$, and let $\epsilon : \mathcal{P}_K/\mathcal{P}_K^{d+1} \rightarrow \mathcal{O}_K/\mathcal{P}_K^d$ be induced by the inclusion $\mathcal{P}_K \hookrightarrow \mathcal{O}_K$. Then (A, M, ϵ) is an element of \mathcal{T} with length d .

Denote the triple constructed in the example by $\text{Tr}_d(K)$.

Morphisms in \mathcal{T}

For $i = 1, 2$ let $S_i = (A_i, M_i, \epsilon_i) \in \mathcal{T}$. A \mathcal{T} -morphism $f : S_1 \rightarrow S_2$ is a triple (e, μ, η) where

- $e \geq 1$. (Say e is the ramification index of S_2 over S_1 .)
- $\mu : A_1 \rightarrow A_2$ is a ring homomorphism.
- $\eta : M_1 \rightarrow M_2^{\otimes e}$ is an A_1 -module homomorphism.

(Here $M_2^{\otimes e} = M_2 \otimes_{A_2} \cdots \otimes_{A_2} M_2$, with e factors.)

These must satisfy

- $\mu \circ \epsilon_1 = \epsilon_2^e \circ \eta$

$$\begin{array}{ccc} M_1 & \xrightarrow{\eta} & M_2^{\otimes e} \\ \epsilon_1 \downarrow & & \downarrow \epsilon_2^e \\ A_1 & \xrightarrow{\mu} & A_2 \end{array}$$

- η induces an A_2 -module isomorphism $M_1 \otimes_{A_1} A_2 \cong M_2^{\otimes e}$.

Let $f = (e, \mu, \eta)$ be a \mathcal{T} -morphism from S_1 to S_2 . Say f is a \mathcal{T} -extension if $\text{length}(S_2) = e \cdot \text{length}(S_1)$. In this case we write S_2/S_1 .

Morphisms in \mathcal{T} (continued)

If we have another \mathcal{T} -morphism $g : S_2 \rightarrow S_3$ given by $g = (e', \nu, \theta)$ then $g \circ f : S_1 \rightarrow S_3$ is defined by $g \circ f = (ee', \nu \circ \mu, \theta^{\otimes e} \circ \eta)$.

We have $\text{id}_{S_i} = (1, \text{id}_{A_i}, \text{id}_{M_i})$. Let $f = (e, \mu, \eta)$ be a \mathcal{T} -morphism from S_1 to S_2 . Then f is an isomorphism if and only if $e = 1$, μ is a ring isomorphism, and η is an isomorphism of A_1 -modules.

Proposition ([De79, 1.2])

Let $S = (A, M, \epsilon) \in \mathcal{T}$. Then there is a local field K and $d \in \mathbb{N}$ such that $S \cong \text{Tr}_d(K)$.

Example

If $1 \leq d \leq e_K$ then $\text{Tr}_d(K) \cong (k[[t]]/(t^d), (t)/(t^{d+1}), \epsilon)$, where $k = \mathcal{O}_K/\mathcal{P}_K$ and ϵ is induced by $(t) \hookrightarrow k[[t]]$.

\mathcal{T} -extensions induced by field embeddings

Let K, L be local fields and let $\sigma : K \rightarrow L$ be a field embedding. Then for $d \in \mathbb{N}$ we get a \mathcal{T} -morphism $f_\sigma = (e_\sigma, \mu_\sigma, \eta_\sigma)$ from $\mathrm{Tr}_d(K)$ to $\mathrm{Tr}_{de_\sigma}(L)$, where

- e_σ is the ramification index of L over $\sigma(K)$.
- $\mu_\sigma : \mathcal{O}_K/\mathcal{P}_K^d \rightarrow \mathcal{O}_L/\mathcal{P}_L^{de_\sigma}$ is induced by σ .
- $\eta_\sigma : \mathcal{P}_K/\mathcal{P}_K^{d+1} \rightarrow \mathcal{P}_L^{e_\sigma}/\mathcal{P}_L^{e_\sigma(d+1)} \cong (\mathcal{P}_L/\mathcal{P}_L^{e_\sigma d+1})^{\otimes e_\sigma}$ is induced by σ .

It follows from the definitions that $f_\sigma : \mathrm{Tr}_d(K) \rightarrow \mathrm{Tr}_{de_\sigma}(L)$ is an extension of truncated valuation rings.

The category of extensions of a truncated valuation ring

Let $S_1 = (A_1, M_1, \epsilon_1)$ be an object in \mathcal{T} . Define a category $\text{ext}(S_1)$ whose objects are \mathcal{T} -extensions $f : S_1 \rightarrow S_2$. If $g : S_1 \rightarrow S_3$ is another object in $\text{ext}(S_1)$, a morphism from S_2/S_1 to S_3/S_1 is a \mathcal{T} -morphism $h : S_2 \rightarrow S_3$ such that $h \circ f = g$.

$$\begin{array}{ccc} S_2 & \xrightarrow{h} & S_3 \\ & \swarrow f & \nearrow g \\ & S_1 & \end{array}$$

Proposition ([De79], Lemma 1.4.4)

Let $S/\text{Tr}_d(K)$ be a \mathcal{T} -extension with ramification index e . Then there is a finite separable field extension L/K such that $\text{Tr}_{de}(L)/\text{Tr}_d(K)$ is isomorphic to $S/\text{Tr}_d(K)$ in the category $\text{ext}(\text{Tr}_d(K))$.

A functor

Let K be a local field, and let $\text{ext}(K)$ be the category of finite separable extensions of K .

Let $d \in \mathbb{N}$. We get a functor $\mathcal{F}_d : \text{ext}(K) \rightarrow \text{ext}(\text{Tr}_d(K))$ by $\mathcal{F}_d(L) = \text{Tr}_{de_{L/K}}(L)$. For a K -embedding $\sigma : L \rightarrow L'$ we define $\mathcal{F}_d(\sigma) = f_\sigma$, where

$$f_\sigma : \text{Tr}_{de_{L/K}}(L) \longrightarrow \text{Tr}_{de_{L'/K}}(L')$$

was defined above.

The functor \mathcal{F}_d is essentially surjective, but it need not be full or faithful ...

An example

Let $K = k((t))$ be a local field of characteristic p , and let L be the extension of K generated by a root of $g(X) = X^p - X - t^{-2p+1}$. Then L/K is a totally ramified cyclic extension of degree p , with $e_{L/K} = p$.

Let α be a root of $g(X)$. Then there is $\sigma \in \text{Gal}(L/K)$ such that $\sigma(\alpha) = \alpha + 1$. Set $\pi_L = t^2\alpha$. Then $v_L(\pi_L) = 1$ and $\sigma(\pi_L) = \pi_L + t^2$.

Taking $d = 1$, we find that $\text{Tr}_p(L)$ is a \mathcal{T} -extension of $\text{Tr}_1(K)$. The functor

$$\mathcal{F}_1 : \text{ext}(K) \longrightarrow \text{ext}(\text{Tr}_1(K))$$

gives a homomorphism from $\text{Gal}(L/K)$ to $\text{Aut}(\text{Tr}_p(L)/\text{Tr}_1(K))$.

Since σ induces the identity on both $\mathcal{O}_L/\mathcal{P}_L^p$ and $\mathcal{P}_L/\mathcal{P}_L^{p+1}$, we have $\mathcal{F}_1(\sigma) = \mathcal{F}_1(\text{id}_L)$. Hence \mathcal{F}_1 is not faithful.

Example (continued)

On the other hand, for $c \in k^\times$ we can define an $\text{ext}(\text{Tr}_1(K))$ -morphism $g_c : \text{Tr}_p(L) \rightarrow \text{Tr}_p(L)$ by $g_c = (1, \text{id}_{\mathcal{O}_L/\mathcal{P}_L^p}, \eta_c)$, where

$$\eta_c : \mathcal{P}_L/\mathcal{P}_L^{p+1} \longrightarrow \mathcal{P}_L/\mathcal{P}_L^{p+1}$$

is the $\mathcal{O}_L/\mathcal{P}_L^p$ -module homomorphism defined by

$$\eta_c(\pi_L + \mathcal{P}_L^{p+1}) = \pi_L + c\pi_L^p + \mathcal{P}_L^{p+1}.$$

So \mathcal{F}_1 is not full.

Similar arguments show that

$$\mathcal{F}_d : \text{ext}(K) \longrightarrow \text{ext}(\text{Tr}_d(K))$$

is neither full nor faithful for any $d \in \mathbb{N}$.

Higher ramification theory

Let L/K be a separable extension of local fields. Let L_0/K be the maximal unramified subextension of L/K and set

$$\Gamma = \{\sigma : L \rightarrow K^{sep} \mid \sigma|_K = \text{id}_K\}$$
$$\Gamma_0 = \{\sigma \in \Gamma : \sigma|_{L_0} = \text{id}_{L_0}\}.$$

For nonnegative real x define a subset of Γ by

$$\Gamma_x = \{\sigma \in \Gamma_0 : v_L(\sigma(\pi_L) - \pi_L) \geq x + 1\}.$$

Say Γ_x is the x th lower ramification subset of Γ .

We have the following:

- If $x \geq y \geq 0$ then $\Gamma_x \subset \Gamma_y$.
- $\Gamma_x = \{\text{id}_L\}$ for all sufficiently large x .

The upper numbering for ramification sets

Define the Hasse-Herbrand function $\phi_{L/K} : \mathbb{R}_{\geq 0} \rightarrow \mathbb{R}_{\geq 0}$ by

$$\phi_{L/K}(x) = \frac{1}{[L : L_0]} \int_0^x |\Gamma_t| dt.$$

Then $\phi_{L/K}$ is a continuous bijection, so we can define $\psi_{L/K} : \mathbb{R}_{\geq 0} \rightarrow \mathbb{R}_{\geq 0}$ by $\psi_{L/K} = \phi_{L/K}^{-1}$.

For $y \geq 0$ set $\Gamma^y = \Gamma_{\psi_{L/K}(y)}$. Say Γ^y is the y th upper ramification subset of Γ .

We have $\Gamma^y = \{\text{id}_L\}$ for y sufficiently large. Set

$$m_{L/K} = \inf\{y \geq 0 : \Gamma^y = \{\text{id}_L\}\}.$$

An example

Let $K = \mathbb{Q}_2$ and let L be generated over \mathbb{Q}_2 by a root $\pi_L = 2^{1/4}$ of $g(X) = X^4 - 2$. Then $L = \mathbb{Q}_2(\pi_L)$.

Let i be a primitive 4th root of unity. Then the \mathbb{Q}_2 -embeddings of L into $\mathbb{Q}_2^{\text{sep}}$ are defined by

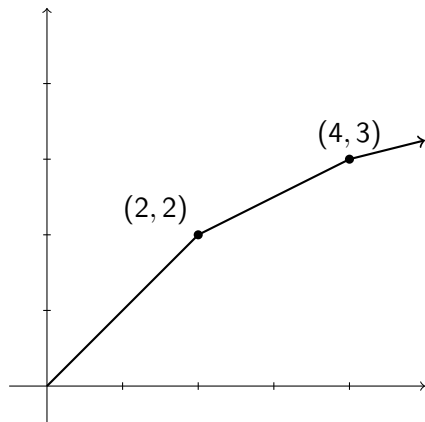
$$\begin{aligned}\sigma_1(\pi_L) &= \pi_L & \sigma_i(\pi_L) &= \pi_L i \\ \sigma_{-1}(\pi_L) &= -\pi_L & \sigma_{-i}(\pi_L) &= -\pi_L i.\end{aligned}$$

We have $v_L(\sigma_{-1}(\pi_L) - \pi_L) = 5$ and $v_L(\sigma_{\pm i}(\pi_L) - \pi_L) = 3$. Hence

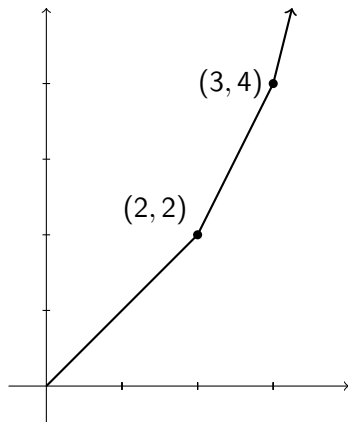
$$|\Gamma_x| = \begin{cases} 4 & (0 \leq x \leq 2) \\ 2 & (2 < x \leq 4) \\ 1 & (4 < x). \end{cases} \quad |\Gamma_y| = \begin{cases} 4 & (0 \leq y \leq 2) \\ 2 & (2 < y \leq 3) \\ 1 & (3 < y). \end{cases}$$

It follows that $m_{L/K} = 3$.

Hasse-Herbrand functions for L/K



$$y = \phi_{L/K}(x)$$



$$y = \psi_{L/K}(x)$$

A condition on field extensions

Let L/K be a finite separable extension of local fields and let $a \geq 0$. Say L/K satisfies condition C^a if one of the following equivalent conditions holds:

- $\Gamma^a = \{\text{id}_L\}$
- $a > m_{L/K}$.

For a local field K let $\text{ext}(K)^a$ denote the full subcategory of $\text{ext}(K)$ whose objects are finite separable extensions of K satisfying C^a .

Condition C^a for truncated valuation rings

Let $S \in \mathcal{T}$ and set $d = \text{length}(S)$. Then there is a local field K such that $S \cong \text{Tr}_d(K)$.

Let $T/S \in \text{ext}(S)$, and let e be the ramification index of T over S . Then there is a separable extension L/K such that $\text{Tr}_{de}(L) \cong T$ and following diagram commutes:

$$\begin{array}{ccc} \text{Tr}_{de}(L) & \xrightarrow{\sim} & T \\ \uparrow & & \uparrow \\ \text{Tr}_d(K) & \xrightarrow{\sim} & S \end{array}$$

Let $a \leq d$. We say that the \mathcal{T} -extension T/S satisfies C^a if L/K satisfies C^a . This definition depends only on the \mathcal{T} -extension T/S , and not on the choices of K and L .

We define a category $\text{ext}(S)^a$ whose objects are \mathcal{T} -extensions of S which satisfy C^a .

An equivalence relation on \mathcal{T} -morphisms

Let $c \in \mathbb{N}$ and let $f = (e, \mu, \eta)$, $f' = (e', \mu', \eta')$ be \mathcal{T} -morphisms from $S_1 = (A_1, M_1, \epsilon_1)$ to $S_2 = (A_2, M_2, \epsilon_2)$. Say $f \equiv f' \pmod{R(c)}$ if all of the following hold:

- $e = e'$.
- μ and μ' induce the same map from A_1/M_1 to A_2/M_2 .
- $\eta(x) - \eta'(x) \in \mathcal{P}_{A_2}^{ec} M_2^{\otimes e}$ for all $x \in M_1$.

Suppose $S_1 = \text{Tr}_d(L_1)$, $S_2 = \text{Tr}_{de}(L_2)$, $f = f_\sigma$, and $f' = f_{\sigma'}$ for some embeddings $\sigma, \sigma' : L_1 \rightarrow L_2$. Then the second and third conditions are equivalent to

$$v_{L_2}(\sigma(\alpha) - \sigma'(\alpha)) \geq e(c + 1)$$

for all $\alpha \in \mathcal{O}_{L_1}$.

An equivalence of categories

Let T/S and T'/S be objects in $\text{ext}(S)^a$. Then there are $d \in \mathbb{N}$, a local field K , and extensions L/K , L'/K such that

$$\begin{aligned}T/S &\cong \text{Tr}_{de_{L/K}}(L)/\text{Tr}_d(K) \\T'/S &\cong \text{Tr}_{de_{L'/K}}(L')/\text{Tr}_d(K).\end{aligned}$$

A morphism from T/S to T'/S in $\text{ext}(S)^a$ is defined to be an $R(\psi_{L/K}(a))$ -equivalence class of morphisms in $\text{ext}(S)$.

Theorem ([De79], Theorem 2.8)

Let $d \in \mathbb{N}$ and $1 \leq a \leq d$. Then the functor $\mathcal{F} : \text{ext}(K)^a \rightarrow \text{ext}(\text{Tr}_d(K))^a$ which maps L/K to $\text{Tr}_{de_{L/K}}(L)/\text{Tr}_d(K)$ is an equivalence of categories.

An application

Corollary

Let K and F be local fields which have the same residue field k and satisfy $e_K \leq e_F$. Then for $1 \leq d \leq e_K$ there is an equivalence of categories between $\text{ext}(K)^d$ and $\text{ext}(F)^d$.

In particular, there is a one-to-one correspondence between separable extensions L/K with $m_{L/K} < e_K$ and separable extensions E/F with $m_{E/F} < e_K$.

Proof: Since $d \leq e_K \leq e_F$ we have

$$\text{Tr}_d(K) \cong (k[[t]]/(t^d), (t)/(t^{d+1}), \epsilon) \cong \text{Tr}_d(F).$$

The equivalence of categories given by the corollary depends on choices of uniformizers for K and F .

This corollary allows us to use constructions of extensions of local fields in characteristic p to get extensions in characteristic 0, and vice-versa.

Making the correspondence explicit

Let K and F be local fields, with $\text{char}(K) = 0$ and $\text{char}(F) = p$. Assume that K and F have the same residue field k , and choose uniformizers π_K, π_F for K, F .

Let $d \leq e_K$, and suppose $E/F \in \text{ext}(F)^d$ is totally ramified of degree n . Let π_E be a uniformizer for E and let

$$g(T) = T^n + \sum_{i=0}^{n-1} a_i T^i$$

be the minimum polynomial for π_E over F . Write $a_i = a_i(\pi_F)$ as a power series in π_F with coefficients in k .

Let $A_i(X) \in \mathcal{O}_K[[X]]$ be the series obtained from $a_i(X)$ by replacing each coefficient by its Teichmüller representative in \mathcal{O}_K . Set

$$G(T) = T^n + \sum_{i=0}^{n-1} A_i(\pi_K) T^i$$

and let L be generated over K by a root of $G(T)$. Then the equivalence of categories from $\text{ext}(F)^d$ to $\text{ext}(K)^d$ maps E/F to L/K .

Comparison with local class field theory

Let K be a local field of characteristic 0 with finite residue field k . Set $F = k((t))$. Suppose $1 \leq d \leq e_K$ and fix a uniformizer π_K for K . Then there is a group isomorphism

$$F^\times / (1 + \mathcal{P}_F^d) \cong K^\times / (1 + \mathcal{P}_K^d).$$

To describe this isomorphism let $t^i u(t) \in F^\times$ with $u(t) \in k[[t]]^\times$. Define $U(t) \in \mathcal{O}_K[[t]]$ to be the series obtained by replacing each coefficient in $u(t)$ by its Teichmüller representative in \mathcal{O}_K .

Then the isomorphism above maps the coset represented by $t^i u(t)$ onto the coset represented by $\pi_K^i U(\pi_K)$.

By class field theory and the above isomorphism we get a one-to-one correspondence between finite abelian extensions L/K such that $m_{L/K} < d$ and finite abelian extensions E/F such that $m_{E/F} < d$.

This correspondence is in agreement with Deligne's equivalence of categories between $\text{ext}(K)^d$ and $\text{ext}(F)^d$.

Application to embedding problems

Let G, \tilde{G} be p -groups and let $\pi : \tilde{G} \rightarrow G$ be an onto homomorphism. Let K be a local field with residue characteristic p . Let L/K be a finite totally ramified Galois extension and let $\phi : G \rightarrow \text{Gal}(L/K)$ be an isomorphism.

The embedding problem associated to this data asks for the following:

- A Galois extension \tilde{L}/K with $L \subset \tilde{L}$.
- An isomorphism $\tilde{\phi} : \tilde{G} \rightarrow \text{Gal}(\tilde{L}/K)$ such that the following diagram commutes:

$$\begin{array}{ccc} \tilde{G} & \xrightarrow{\pi} & G \\ \tilde{\phi} \downarrow & & \downarrow \phi \\ \text{Gal}(\tilde{L}/K) & \longrightarrow & \text{Gal}(L/K) \end{array}$$

If $\text{char}(K) = p$ then this type of embedding problem can always be solved, as shown by Witt [Wi36]. If $\text{char}(K) = 0$ then the embedding problem may or may not have a solution.

Application to embedding problems (continued)

We wish to use Deligne's result to get sufficient conditions for an embedding problem in characteristic 0 to be solvable.

Let K be a local field of characteristic 0 and let L/K be a totally ramified Galois extension. Let $\pi : \tilde{G} \rightarrow G$ be an onto homomorphism of p -groups and let $\phi : G \rightarrow \text{Gal}(L/K)$ be an isomorphism.

If $e_K > m_{L/K}$ then there is a G -extension E/F of local fields of characteristic p which corresponds to L/K . The embedding problem associated to $\pi : \tilde{G} \rightarrow G$ and E/F has a solution \tilde{E}/F .

Can we use Deligne to get a solution \tilde{L}/K to the original embedding problem in characteristic 0?

It follows from [EK23] that there is $C > 0$, depending only on the group extension $\pi : \tilde{G} \rightarrow G$, such that there exists a solution \tilde{E}_0/F to the characteristic- p embedding problem satisfying $m_{\tilde{E}_0/F} \leq Cm_{E/F}$.

Hence if $e_K > Cm_{L/K} = Cm_{E/F}$ then the characteristic-0 embedding problem has a solution \tilde{L}_0/K .

References

- [De79] P. Deligne, Les corps locaux de caractéristique p , limites de corps locaux de caractéristique 0, in: Representations of Reductive Groups over a Local Field, Travaux en Cours, Hermann, Paris, 1984, 119–157.
- [EK23] G. G. Elder and K. Keating, Galois scaffolds for p -extensions in characteristic p , preprint.
- [Wi36] E. Witt, Konstruktion von galoisschen Körpern der Charakteristik p zu vorgegebener Gruppe der Ordnung p^f , J. Reine Angew. Math. **174** (1936), 237–245.